



CP0017-CP0057

ITA **Struttura** Polietilene riciclabile tinto in massa ottenuto da stampaggio rotazionale. Nella versione laccata il materiale usato è in nylon.

ENG **Structure** Rotationally moulded, integrally coloured and recyclable polyethylene. The lacquered version is in nylon.

DEU **Struktur** Recyclebares Polyethylen, durchgefärbt, erzeugt durch Rotationsformen. Aus Nylon in der lackierten Ausführung.

FRA **Structure** Polyéthylène recyclable teinté dans la masse obtenu par rotomoulage. La version laquée est en nylon.

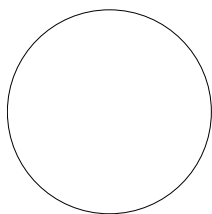
Prove tecniche - Technical tests - Technische Prüfungen - Essais techniques

EN 1728:2000 clause 6.2.1 EN 1728:2000 clause 6.15

MATERIALI E FINITURE

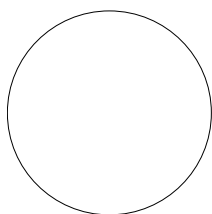
MATERIALS AND FINISHES - MATERIALIEN UND AUSFÜHRUNGEN - MATERIAUX ET FINITIONS

Colore 017
Color 017
Farbe 017
Couleur 017

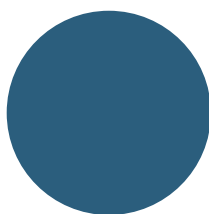


White

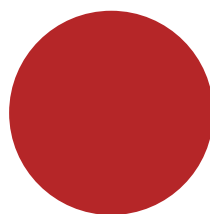
Colori laccato 057
Lacquered colors 057
Lackfarben 057
Couleurs laqué 057



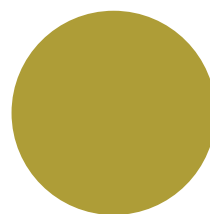
RAL 9003
Frangipane white



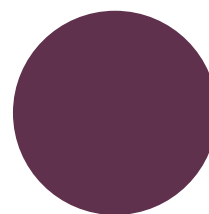
PANT.308 M
Indigo blue



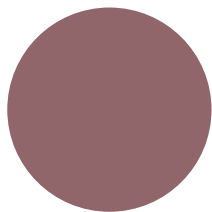
RAL 3020
Red



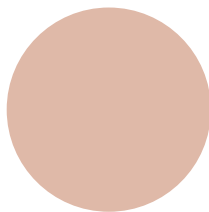
PANT.613 M
Curry powder



PANT.229 M
Red Berry



PANT.4995 M
Indian pink



PANT.7415 M
Lotus

Pouf
Stool - Hocker - Pouf
0,1 m³ 5 Kg

017



Pouf laccato
Lacquered stool - Hocker lackiert - Pouf laqué
0,1 m³ 5 Kg

057

