

Volant, Paper planes





Setting the Elegance  
**DISPLAY PROPOSALS**

**8**

Item list

**Volant**

design Patricia Urquiola, 2007

VO0 297, cm. 255x103x77H, front: Reflex 639 - A6174 cat.AD,  
 back: Uniform Melange Ash - A7394 cat.W,

bend fabric: Uniform Melange Oil - A8100 cat.W, base: chromium-plated steel

pillow, AG0 080, cm. 52x52, Sirocco 611 - A8401 cat.AA

pillow, AG0 04K, cm. 40x40, Fuse 421 - A6088 cat.AD

**Paper Planes**

design Nipa Doshi & Jonathan Levien, 2010

PP0 437 / PP0 438, cm. 94x76x91H, front: Madame du Barry - A7799 cat.AB,  
 back: Masai 142 - A8347 cat.AA, base: graphite RAL 7024,

piping: leather Blush cirè B 218

**Capitello**

design Rajiv Saini, 2009

CP0 057, cm. 45x45x47H, lotus PANTONE 7415 M

**Byobu**

design Nendo, 2012

BY0 T31, cm. ø60x40H, top: extrawhite satin crystall, base: Wiessgrau RAL 9002

BY0 T30, cm. ø60x57H, top: extrawhite satin crystall, base: Wiessgrau RAL 9002

**Rugs**

GOLRAN Lake grey, 01G M86, cm. 200x300

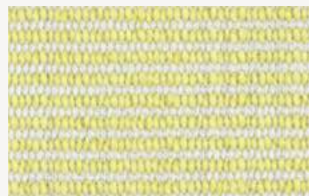
GOLRAN Lake grey, 01G M86, cm. 200x300

GOLRAN Shadowy alluminio, 01G M85, cm. 200x300

GOLRAN Shadowy white, 01G M85, cm. 200x300



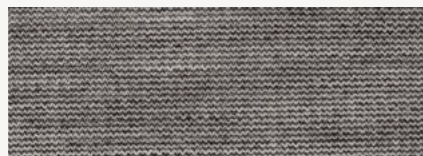
Reflex 639 - A6174



Fuse 421 - A6088



Sirocco 611 - A8401



Uniform Melange Ash - A7394



Uniform Melange Oil - A8100



Madame du Barry 30083 - A7799



Masai 142 - A8347



Leather Blush cirè - B218