



' vol. 1 **SOFAS AND SEATING SYSTEMS**

**SOFAS and SEATING ELEMENTS for COMPOSITIONS**

Structure is injected flame-retardant polyurethane foam and polyester fiberfill over internal steel and wood frame.  
 Seat cushions are in goose down over polyurethane foam.  
 Back, armrest and optional cushions are goose down.  
 Feet are in tubular steel with powder coat finish or in varnished ash.

The Josh collection covers are removable.

' vol. 1 **DIVANI E SISTEMI DI SEDUTE**

**DIVANI ed ELEMENTI DI SEDUTA per COMPOSIZIONI**

Basi in poliuretano schiumato a freddo ignifugo e fibra poliestere con struttura interna in legno e acciaio.  
 I cuscini di seduta sono in piuma d'oca con l'inserto in poliuretano espanso. I cuscini dello schienale, del bracciolo e quelli opzionali sono in piuma d'oca.  
 Piedi in tubo di acciaio verniciato a polveri o in legno di frassino verniciato.  
 La collezione Josh è sfoderabile.



**Recommended fabric hangers**

**Tirelle e tessuti consigliati**

121-Elastic Fantastic 1 > Elastic 1 Uniform Melange

134-Elastic Fantastic 3 > Otto

135-Spring Palette > 6, 7 10, 11

136-Mini Me > 1 Baby Braid, 2 Mini Husk

-Birds, Leafs, Ikebana

**Steel colors Colori acciaio**



titanium

**Wood colors Colori legno**



ASH grey



ASH graphite



ASH shell



ASH pale tan



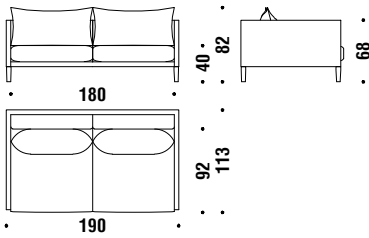
ASH tropical wood

## 2 seater sofa

### Divano 2 posti

002

8,8 mt. ★ 16,8 m<sup>2</sup> 1,9 m<sup>3</sup> 90 Kg

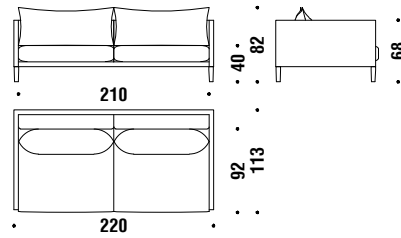


## 2 seater sofa major

### Divano 2 posti major

018

9,4 mt. ★ 17,9 m<sup>2</sup> 2,1 m<sup>3</sup> 95 Kg

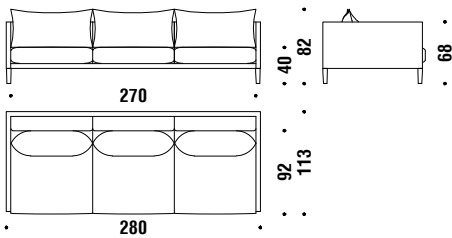


## 3 seater sofa

### Divano 3 posti

003

9,9 mt. ★ 18,8 m<sup>2</sup> 2,6 m<sup>3</sup> 110 Kg

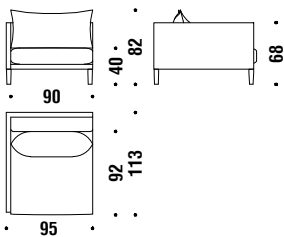


## Element left 95

### Elemento sinistro 95

N01

5,9 mt. ★ 11,1 m<sup>2</sup> 1 m<sup>3</sup> 35 Kg

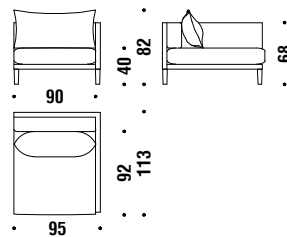


## Element right 95

### Elemento destro 95

N02

5,9 mt. ★ 11,1 m<sup>2</sup> 1 m<sup>3</sup> 35 Kg

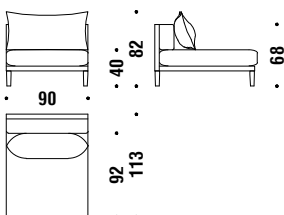


## Central element 90

### Elemento centrale 90

N03

4,4 mt. ★ 8,4 m<sup>2</sup> 1 m<sup>3</sup> 35 Kg

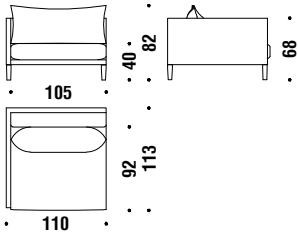


## Element left 110

### Elemento sinistro 110

N04

6,1 mt. 11,6 m<sup>2</sup> 0,7 m<sup>3</sup> 40 Kg

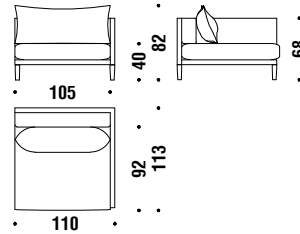


## Element right 110

### Elemento destro 110

N05

6,1 mt. 11,6 m<sup>2</sup> 0,7 m<sup>3</sup> 40 Kg

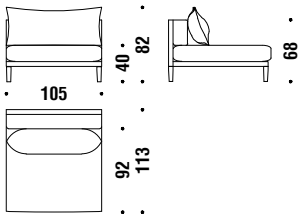


## Central element 105

### Elemento centrale 105

N06

4,8 mt. 9 m<sup>2</sup> 0,7 m<sup>3</sup> 40 Kg

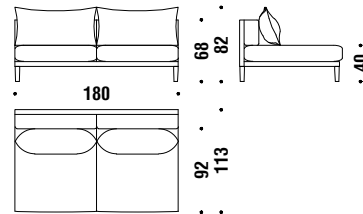


## 2 seater central element

### Elem.2p centrale

07A

6,4 mt. 12,1 m<sup>2</sup> 1,9 m<sup>3</sup> 65 Kg

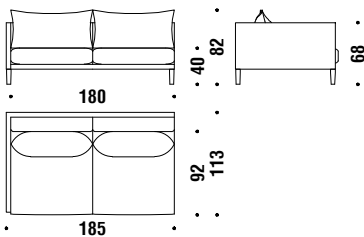


## Lateral 2 seat unit left

### Elemento 2 posti sinistro

023

7,6 mt. 14,4 m<sup>2</sup> 1,9 m<sup>3</sup> 80 Kg

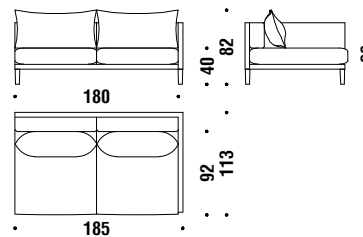


## Lateral 2 seat unit right

### Elemento 2 posti destro

022

7,6 mt. 14,4 m<sup>2</sup> 1,9 m<sup>3</sup> 80 Kg

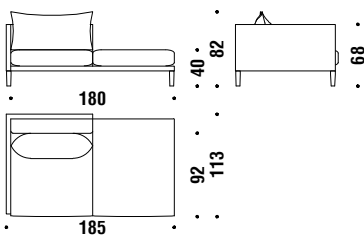


## Lateral 2 seat left peninsula

### Penisola 2p sinistra

0TH

6,4 mt. 12,1 m<sup>2</sup> 1,9 m<sup>3</sup> 80 Kg

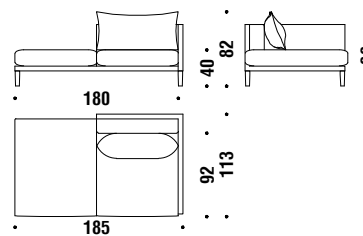


## Lateral 2 seat right peninsula

### Penisola 2p destra

0TG

6,4 mt. 12,1 m<sup>2</sup> 1,9 m<sup>3</sup> 80 Kg

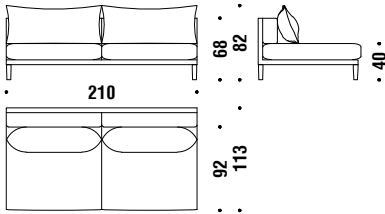


## 2 seater major central element

Elem.2p centrale major

0M5

7,1 mt. 13,5 m<sup>2</sup> 2,1 m<sup>3</sup> 80 Kg

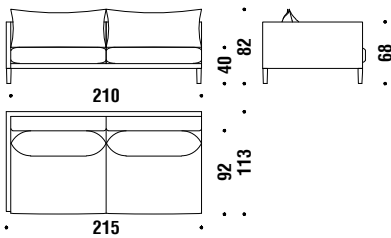


## Lateral 2 seat unit major left

Elem.2p major sx

037

8,3 mt. 15,8 m<sup>2</sup> 2,1 m<sup>3</sup> 83 Kg

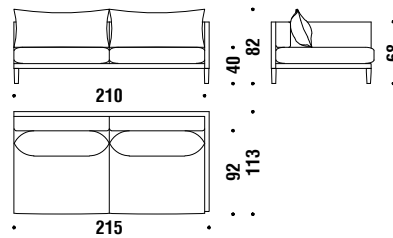


## Lateral 2 seat unit major right

Elem.2p major dx

031

8,3 mt. 15,8 m<sup>2</sup> 2,1 m<sup>3</sup> 83 Kg

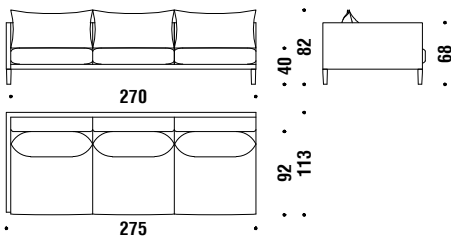


## Lateral 3 seat unit left

Elemento 3p sinistro

033

8,7 mt. 16,5 m<sup>2</sup> 2,6 m<sup>3</sup> 95 Kg

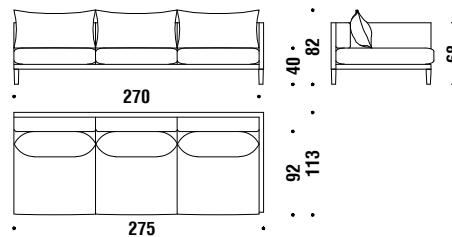


## Lateral 3 seat unit right

Elemento 3p destro

032

8,7 mt. 16,5 m<sup>2</sup> 2,6 m<sup>3</sup> 95 Kg

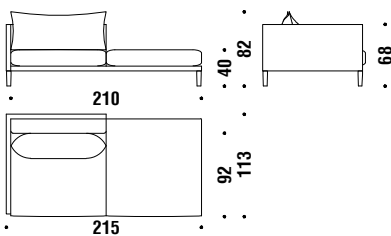


## Lateral 2 seat major left peninsula

Penisola 2p mj sx

OTM

7,1 mt. 13,4 m<sup>2</sup> 2,1 m<sup>3</sup> 70 Kg

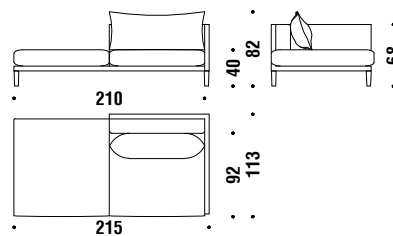


## Lateral 2 seat major right peninsula

Penisola 2p mj dx

OTL

7,1 mt. 13,4 m<sup>2</sup> 2,1 m<sup>3</sup> 70 Kg

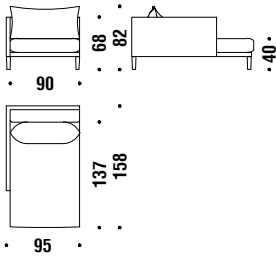


## Chaise Longue left 95x160

Chaise Longue sinistra 95x160

OD4

7,2 mt. ★ 13,7 m<sup>2</sup> 1,4 m<sup>3</sup> 65 Kg

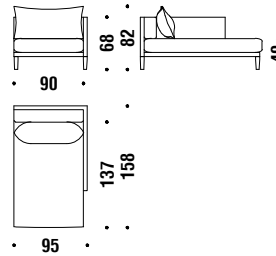


## Chaise Longue right 95x160

Chaise Longue destra 95x160

OD3

7,2 mt. ★ 13,7 m<sup>2</sup> 1,4 m<sup>3</sup> 65 Kg

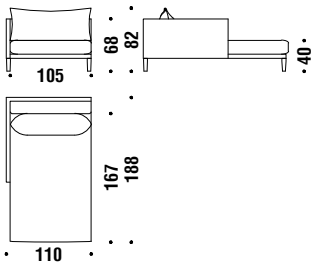


## Chaise Longue left 110x190

Chaise Longue sinistra 110x190

OLQ

7,6 mt. ★ 14,4 m<sup>2</sup> 1,9 m<sup>3</sup> 85 Kg

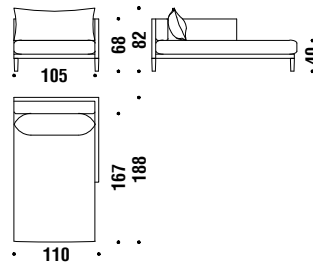


## Chaise Longue right 110x190

Chaise Longue destra 110x190

OLP

7,6 mt. ★ 14,4 m<sup>2</sup> 1,9 m<sup>3</sup> 85 Kg

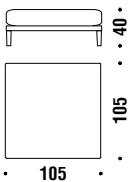


## Stool 105x105

Pouf 105x105

775

8,3 mt. ★ 15,8 m<sup>2</sup> 0,7 m<sup>3</sup> 35 Kg

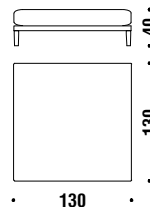


## Stool 130x130

Pouf 130x130

987

8,8 mt. ★ 16,8 m<sup>2</sup> 0,9 m<sup>3</sup> 55 Kg

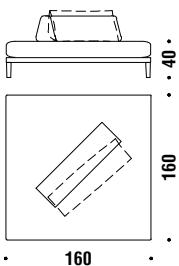


## Stool 160x160

Pouf 160x160

988

9,4 mt. ★ 17,8 m<sup>2</sup> 1,5 m<sup>3</sup> 75 Kg

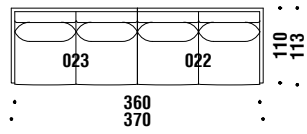


## Composition A12

Composizione A12

A12

15,2 mt. 28,8 m<sup>2</sup> 3,8 m<sup>3</sup> 160 Kg

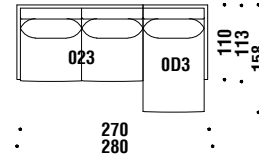


## Composition B1 right or B1 left

Composizione B1Dx-B1Sx

B01

14,8 mt. 28,1 m<sup>2</sup> 3,3 m<sup>3</sup> 145 Kg

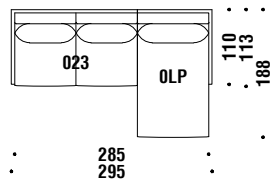


## Composition B20R or B20L

Composizione B20Dx-B20Sx

B20

15,2 mt. 28,8 m<sup>2</sup> 3,8 m<sup>3</sup> 165 Kg

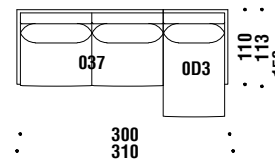


## Composition B right or B left

Composizione BDx-BSx

B00

15,5 mt. 29,5 m<sup>2</sup> 3,5 m<sup>3</sup> 148 Kg

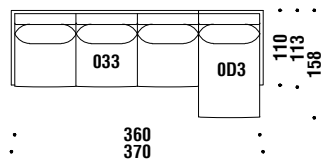


## Composition B80R or B80L

Composizione B80Dx-B80Sx

B80

15,9 mt. 30,2 m<sup>2</sup> 4 m<sup>3</sup> 160 Kg

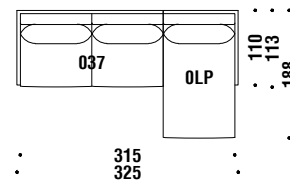


## Composition B50R or B50L

Composizione B50Dx-B50Sx

B50

15,9 mt. 30,2 m<sup>2</sup> 4 m<sup>3</sup> 168 Kg

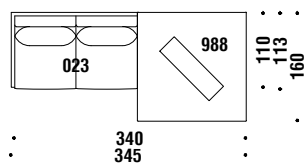


## Composition B10R or B10L

Composizione B10Dx-B10Sx

B10

17 mt. 32,2 m<sup>2</sup> 3,4 m<sup>3</sup> 155 Kg

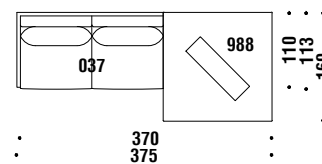


## Composition B40R or B40L

Composizione B40Dx-B40Sx

B40

17,7 mt. 33,6 m<sup>2</sup> 3,6 m<sup>3</sup> 158 Kg

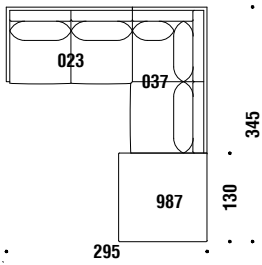


## Composition B60R or B60L

Composizione B60Dx-B60Sx

B60

24,7 mt. ★ 47 m<sup>2</sup> 4,9 m<sup>3</sup> 218 Kg

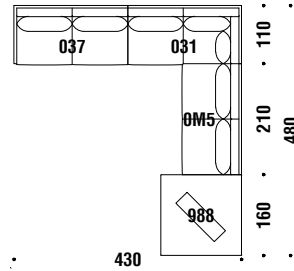


## Composition B30R or B30L

Composizione B30Dx-B30Sx

B30

33,1 mt. ★ 62,9 m<sup>2</sup> 7,8 m<sup>3</sup> 321 Kg

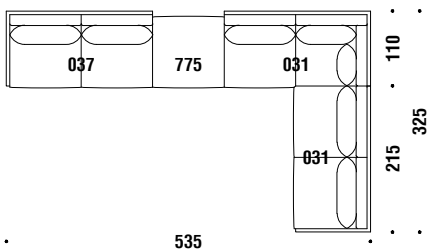


## Composition B70R or B70L

Composizione B70Dx-B70Sx

B70

33,2 mt. ★ 63,2 m<sup>2</sup> 7 m<sup>3</sup> 284 Kg

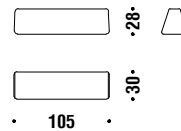


## Cushion for stool

Cuscino pouf

05N

1,7 mt. ★ 3,2 m<sup>2</sup> 7 Kg



## Cushion 60x60

Cuscino 60x60

AG0081

0,7 mt. ★ 0,8 m<sup>2</sup>

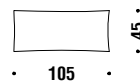


## Back cushion 105

Cuscino schiena 105

GE00K3

1,2 mt. ★ 2,3 m<sup>2</sup> 3 Kg



## Cushion

Cuscino

S31080

