

Design Patricia Urquiola - 2009



' vol. 1 SOFAS AND SEATING SYSTEMS

## COMPOSITIONS

Elements in flame-retardant polyurethane foam in varied densities and polyester fiberfill on wood frame. Feet in black polypropylene screwed to the frame.

## ARMCHAIR and SMALL ARMCHAIR

Injected flame-retardant polyurethane foam over internal steel frame. Feet in PVC.

The Rift collection covers are not removable.

' vol.1 SOFAS UND SITZSYSTEME

## KOMPOSITIONEN

Elemente aus PU-Schaum, feuerhemmend in unterschiedlicher Dichte und Polyesterwatte, Innenstruktur aus Holz.

FüÙe aus schwarzem Polypropylen, an der Struktur verschraubt.

## SESSEL und KLEINER SESSEL

PU-Kaltschaum feuerhemmend, mit Innenstruktur aus Stahl. FüÙe aus PVC.

Die Kollektion Rift ist nicht abziehbar.



## Recommended fabric hangers

### Vorgeschlagene Stoffbuegel

135-Spring Palette > 7, 10, 11

139-Norwegian Wood > Orsetto, Zanzibar

-Divina 3, Divina Melange 3, Divina MD by Kvadrat

-Hallingdal 65 by Kvadrat

-Tonus 4 by Kvadrat

-Pelle / Leather T

-Pelle / Leather Z > Ciré, Ciré Soft, Cervo



' vol. 2 **SINGLE SEATS, TABLES AND ACCESSORIES**

**CHAIRS**

Seat is self-skin rigid polyurethane; cantilever base is square tubular steel with powder coat finish.  
Chairs are stackable up to 4 high.

**STOOLS**

Seat is polypropylene; cantilever base is square tubular steel with powder coat finish.

**NOTE:**

- Chair and barstool seat cushions are polyurethane foam and polyester fiberfill with Remix covers in colors shown (cat. S).

' vol.2 **EINZELSITZMÖBEL, KLEINE TISCHE UND ZUBEHÖR**

**STÜHLE**

Sitzschale aus strukturellem Polyurethan-Integralschaum, lackiertes Stahlgestell.  
Der Freischwinger ist stapelbar bis zu 4 Stück.

**HOCKER**

Sitzschale aus Polypropylen und lackiertes Stahlgestell.

**HINWEIS:**

- Die Kissen für Stuhl und Hocker sind aus Polyurethanschaum und erhältlich nur mit dem Stoff Remix (Kat. S).

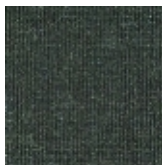
**Technical tests - Technische Prüfungen**

Rift sgabello cod 111-112  
EN 1728:2000 clause 6.7 level 3 severe  
ANSI-BIFMA X5.1-2011/8  
ANSI-BIFMA X5.1-2011/11

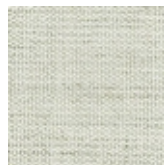
**Fabric seat cushions colors Farben Stuhlkissen und Hocker**



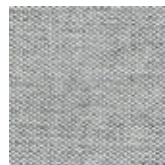
REMIK 653



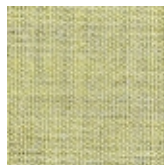
REMIK 973



REMIK 113

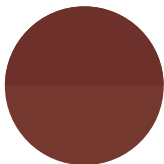


REMIK 123

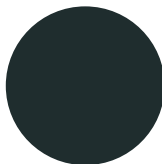


REMIK 923

**Shell and bases chair/stools colors Farben Stuhl/Hocker Sitzschale und Gestelle**



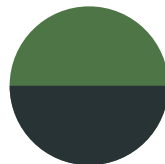
PANT. 181 / RAL 3009  
brown / oxidored



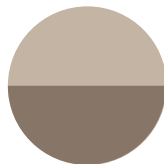
RAL 9005 / RAL 9005  
black / black



RAL 9003/ RAL 9002  
traffic white / white  
chalk



RAL 6010 / PANT.5463  
grass green / ink



PANT. 7529 / NCS S 5005-Y20R  
sand / concrete



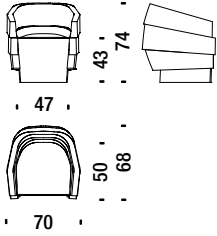
RAL 1005 / NCS S 5005-Y20R  
honey yellow / concrete

## Small armchair

### Sessel klein

061

5,6 mt. ★ 9,9 m<sup>2</sup> 0,5 m<sup>3</sup> 35 Kg

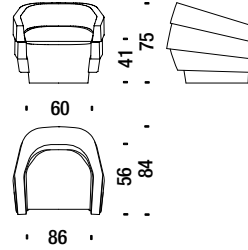


## Armchair

### Sessel

001

7 mt. ★ 11,6 m<sup>2</sup> 0,6 m<sup>3</sup> 40 Kg

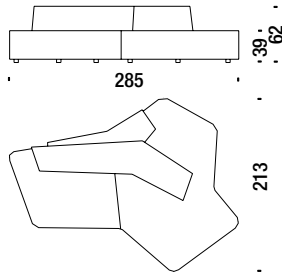


## Composition Y

### Zusammenstellung Y

345

11 mt. ★ 20 m<sup>2</sup> 2,9 m<sup>3</sup> 110 Kg

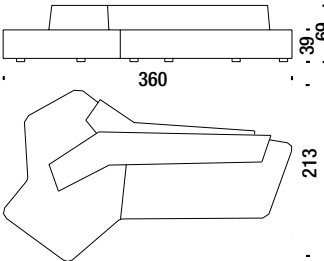


## Y large composition left

### Zusammenstellung gross Y links

346

13,1 mt. ★ 23 m<sup>2</sup> 3 m<sup>3</sup> 160 Kg

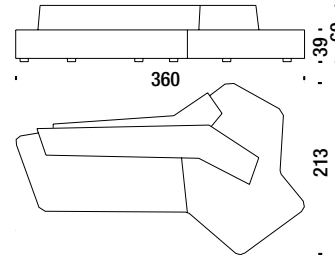


## Y large composition right

### Zusammenstellung gross Y rechts

347

13,1 mt. ★ 23 m<sup>2</sup> 3 m<sup>3</sup> 160 Kg

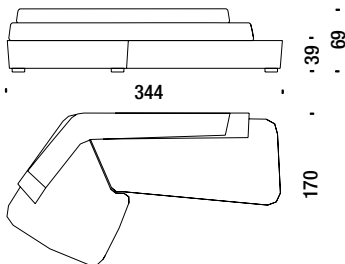


## L composition left

### Zusammenstellung L links

348

12,6 mt. ★ 22,3 m<sup>2</sup> 4,4 m<sup>3</sup> 150 Kg

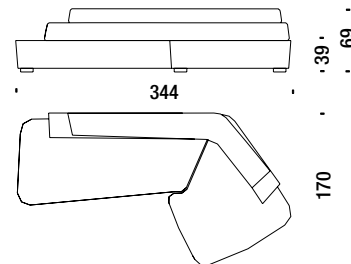


## L composition right

### Zusammenstellung L rechts

349

12,6 mt. ★ 22,3 m<sup>2</sup> 4,4 m<sup>3</sup> 150 Kg

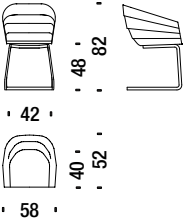


## Chair cantilever

### Stuhl freischwinger

338

0,4 m<sup>3</sup> 10,5 Kg

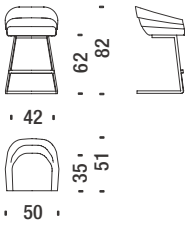


## Bar stool low

### Barhocker tief

111

0,3 m<sup>3</sup> 8 Kg

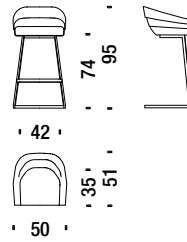


## Bar stool high

### Barhocker hoch

112

0,3 m<sup>3</sup> 10 Kg



## Chair cushion

### Stuhl kissen

318

0,5 mt. 0,7 m<sup>2</sup>



## Bar stool cushion

### Barhocker kissen

319

0,4 mt. 0,5 m<sup>2</sup>

