

Design Patricia Urquiola - 2009



' vol. 1 SOFAS AND SEATING SYSTEMS

COMPOSITIONS

Elements in flame-retardant polyurethane foam in varied densities and polyester fiberfill on wood frame. Feet in black polypropylene screwed to the frame.

ARMCHAIR and SMALL ARMCHAIR

Injected flame-retardant polyurethane foam over internal steel frame. Feet in PVC.

The Rift collection covers are not removable.

' vol.1 CANAPÉS ET SYSTÈMES DE SIÈGES

COMPOSITIONS

Éléments en mousse de polyuréthane ignifugée à densité variable et fibre polyester avec structure interne en bois.

Pieds en polypropylène noir vissés à la structure.

FAUTEUIL et PETIT FAUTEUIL

Mousse de polyuréthane ignifugée injectée à froid avec structure interne en acier.

Pieds en PVC.

La collection Rift n'est pas déhoussable.



Recommended fabric hangers

Liasses de tissus conseillées

135-Spring Palette > 7, 10, 11

139-Norwegian Wood > Orsetto, Zanzibar

-Divina 3, Divina Melange 3, Divina MD by Kvadrat

-Hallingdal 65 by Kvadrat

-Tonus 4 by Kvadrat

-Pelle / Leather T

-Pelle / Leather Z > Ciré, Ciré Soft, Cervo



' vol. 2 **SINGLE SEATS, TABLES AND ACCESSORIES**

CHAIRS

Seat is self-skin rigid polyurethane; cantilever base is square tubular steel with powder coat finish.
Chairs are stackable up to 4 high.

STOOLS

Seat is polypropylene; cantilever base is square tubular steel with powder coat finish.

NOTE:

- Chair and barstool seat cushions are polyurethane foam and polyester fiberfill with Remix covers in colors shown (cat. S).

' vol.2 **SIÈGES INDIVIDUELS, TABLES BASSES ET ACCESSOIRES**

CHAISES

Coque en polyuréthane intégral structural et piètement cantilever en acier laqué.
La chaise cantilever est empilable (jusqu'à 4 unités).

TABOURETS

Coque en polypropylène et piètement en acier laqué.

NOTE:

- Les coussins de la chaise et des tabourets sont en mousse de polyuréthane et sont disponibles uniquement dans le tissu Remix (cat. S).

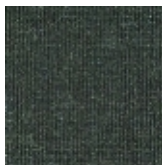
Technical tests -Essais techniques

Rift sgabello cod 111-112
EN 1728:2000 clause 6.7 level 3 severe
ANSI-BIFMA X5.1-2011/8
ANSI-BIFMA X5.1-2011/11

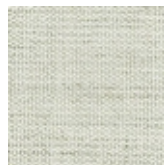
Fabric seat cushions colors Couleurs coussins de chaise et tabourets



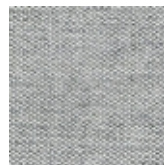
REMIK 653



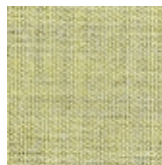
REMIK 973



REMIK 113

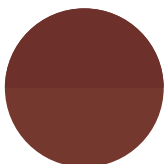


REMIK 123



REMIK 923

Shell and bases chair/stools colors Couleurs coque et bases chaise/tabourets



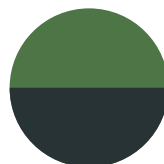
PANT. 181 / RAL 3009
brown / oxidored



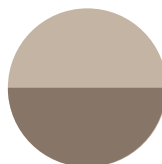
RAL 9005 / RAL 9005
black / black



RAL 9003/ RAL 9002
traffic white / white
chalk



RAL 6010 / PANT.5463
grass green / ink



PANT. 7529 / NCS S 5005-Y20R
sand / concrete



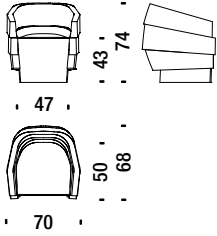
RAL 1005 / NCS S 5005-Y20R
honey yellow / concrete

Small armchair

Petit fauteuil

061

5,6 mt. ★ 9,9 m² 0,5 m³ 35 Kg

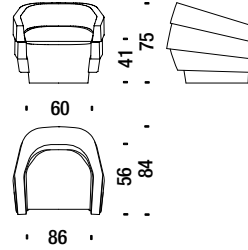


Armchair

Fauteuil

001

7 mt. ★ 11,6 m² 0,6 m³ 40 Kg

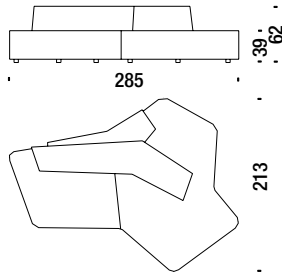


Composition Y

Composition Y

345

11 mt. ★ 20 m² 2,9 m³ 110 Kg

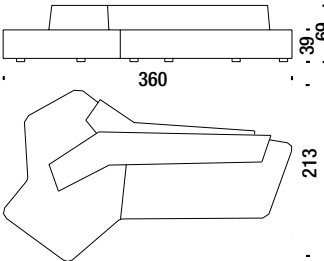


Y large composition left

Composition grand Y gauche

346

13,1 mt. ★ 23 m² 3 m³ 160 Kg

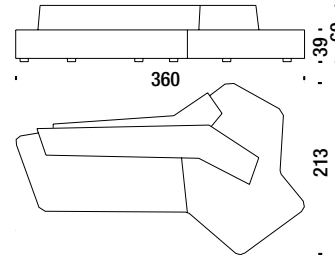


Y large composition right

Composition grand Y droite

347

13,1 mt. ★ 23 m² 3 m³ 160 Kg

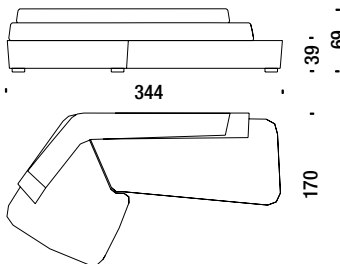


L composition left

Composition L gauche

348

12,6 mt. ★ 22,3 m² 4,4 m³ 150 Kg

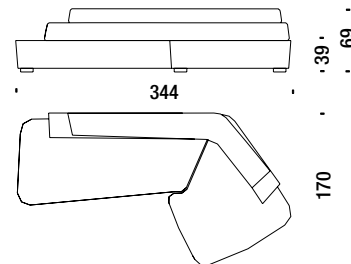


L composition right

Composition L droite

349

12,6 mt. ★ 22,3 m² 4,4 m³ 150 Kg

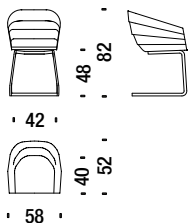


Chair cantilever

Chaise cantilever

338

0,4 m³ 10,5 Kg

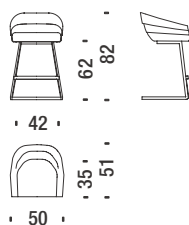


Bar stool low

Tabouret bar bas

111

0,3 m³ 8 Kg

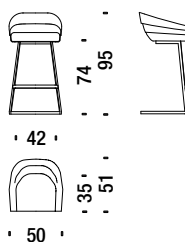


Bar stool high

Tabouret bar haut

112

0,3 m³ 10 Kg



Chair cushion

Coussin chaise

318

0,5 mt. 0,7 m²



Bar stool cushion

Coussin tabouret bar

319

0,4 mt. 0,5 m²

