



' vol. 3 IN/OUTDOOR

CHAISE LONGUE, ARMCHAIR and STOOL

Frames are rust-proofed tubular steel and wrapped with polyethylene cord. Polyethylene cord in a range of colors is handwoven to frames. PVC glides.

NOTES:

- all items in this collection are entirely handmade; each piece is unique, and variations in colors, weaves and shapes are not considered defects
- certain colors may fade in direct sunlight and although this will alter the product's appearance, it is not considered a defect.

' vol.3 IN/OUTDOOR

CHAISE LONGUE, POLTRONA e POUF

Struttura in acciaio verniciato e fili colorati in polietilene intrecciati a mano. Sottopiedi in PVC.

NOTE:

- i pezzi della collezione sono realizzati completamente a mano; ogni prodotto è unico ed eventuali diversità nei colori e negli intrecci non sono da considerarsi difetti
- la prolungata esposizione ai raggi solari può provocare un leggero scolorimento del filo tale da alterare l'aspetto del prodotto che, tuttavia, non è da considerarsi un difetto.

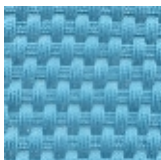
Design Federica Capitani - 2016



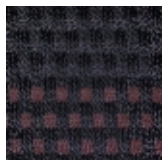
Pattern colors - Colori intrecci



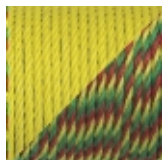
rouge



bleu ciel



noir - oxyde

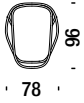
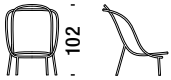


or - jaune

Armchair

Poltrona 001

0,9 m³ 19 Kg

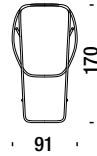
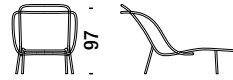


€

Chaise Longue

Chaise Longue 036

1,7 m³ 25 Kg



€

Stool

Pouf 017

0,2 m³ 8 Kg



€
